

“Shadow Brook”
borders most sites.



Camp in the woods,
By the stream...



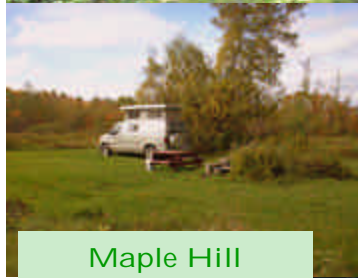
Maple Hill Campsites



Sunsets over the
Adirondacks

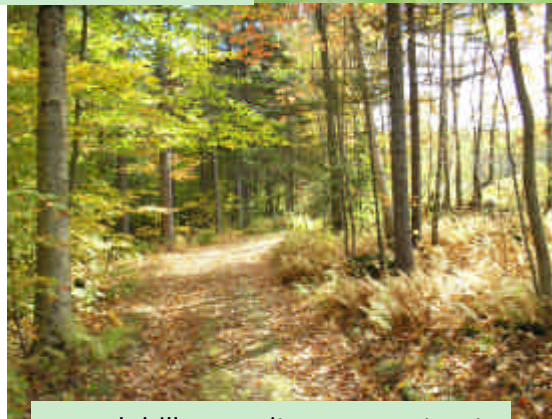
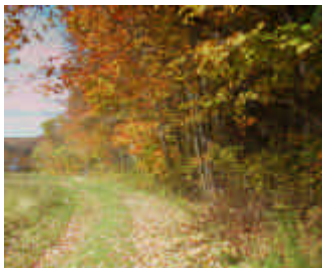


Or in the field



Maple Hill
In Vermont's Green
Mtns. near Lincoln in
South Starksboro, just 3
tenths of a mile off of
Scenic Rte. 17

Free Hot
Showers



maplehillcampsites@gmavt.net



Here at Maple Hill Each site has a unique Personality

With 50'
between most
sites... each
has privacy



2008 price

based on tent with

2 adults & 2 children or less

Nightly:	\$22.00
Add:	
For electricity	\$4.00
Each extra adult	\$4.00
Each extra child (under 16)	\$1.00
Weekly	\$132.00
With elec.	\$156.00
Monthly	\$380.00
Seasonal	\$1,500.00
With elec. per month add (Electricity is only about 20 amps.)	\$30.00

We have a few spaces suited to
Pop-Ups or small RVs

Reservations accepted with de-
posit of first night's cost. Refundable
with one full week's notice.

Maple Hill is as green as it can be: We are trying to pre- serve the wild acres with the least human impact.

Our forests; in which campers
may hike, are treated with
respect, with an eye to Conser-
vation and Sustainability of
both the Woods and the Wildlife.

We follow the management
practices of "Vermont Family
Forests" and keep our land in
the 'Land Use Plan of Vermont',
meaning we are NOT Develop-
ing our nearly 200 acres of land.

The primary goal of our
campsites is to provide income
for the land's own tax and up-
keep.



We are not in a town, we are "out in
the country" in a little place called
South Starksboro.

Near Maple Hill is Bartlett's; the
town Swimmin' hole; just a 5 minute
drive; on the Lincoln Rd.

It is an easy drive to Lake Champlain
or Lake Dunmore.

Hikers; in nearby Jerusalem a trail
leads to the Long Trail, taking you to
Mount Ellen or Mt. Abraham.

For Fishermen, a few minutes walk
takes you to Baldwin Creek, where
the 16" trout hide.

The Jerusalem Store is just 1 1/2 miles
up Route 17, or travel downhill 5
miles to Bristol, with gift, art and
craft shops, Laundromat, a great
bakery and several eateries.

We are 30 min or less from both
Waitsfield and Middlebury with
Burlington to the North just a 40
minute drive.

Museums, Antique Shops and beauti-
ful scenery surround Maple Hill.

Maple Hill Campsites

3825 Quaker Street

Bristol, Vermont

05443

Phone: (802) 453-3687

maplehillcampsites@gmavt.net

We have a new website at

maplehillcampsites.com